

# Mobile Tanks for Diesel Oil

Available at 12V o 24V DC - Flow rate of 40 or 60 Lt/min



**FLM 220**  
• Capacity: 220 Liters  
• Weight: 25 kg  
• Dimensions: 800 x 600 h650 mm



**FLM 440**  
• Capacity: 440 Liters  
• Weight: 55 kg  
• With fuel level gauge  
• Dimensions: 1180 x 780 h770 mm

Tanks made out of linear HDPE (minimum thickness 6 mm) suitable for diesel fuel transporting, in total exemption of ADR 1.1.3.1.C

# Diesel Filter

## Diesel filter with holder

The fuel cartridge **DIESEL FILTER** is easily suitable on the delivery lines of fuel dispenser and it is recommended for all the applications *where the fuel is requested without dirt and water traces.*



## Filter cartridge



The particular substances in the filter ensure the absorption of water drops in the fuel, while the filtering structure ensure a effective barriers about dirty particles greater than 30 micrometers.  
Dimensions: 190 x 95 mm  
Flow rate max: 70 Litri/min  
Filtration: 30 Micron  
Working pressure: 4 bar max.  
Connection: 1"-12 UNF

## Filter Holder

The filter holder is made out of aluminum and it is suitable on the following range of diesel dispenser:  
FLW 60 DC/AC  
FLP 60 DC/AC  
FLT 60 DC/AC.



# Flow Meters with RRPS Nozzles

## FM3 - FM4 Mechanical Diesel Flow Meters

Meter out of aluminium, 1" connections and flanges, with 4 or 3 digits display  
Flow rate: 20-120 Lt/min  
*The meters are driven by a magnetic system that reduces friction and ensures:*  
- High precision measurement also at low flow rate  
- Lifetime leakproof



New!

## FM LCD Electronic Diesel Flow Meter

Electronic Meter out of aluminium, 1" connections and flanges, with LCD display  
Flow rate: 20-120 Lt/min



**RRPS** Rotable Reading Position System (Patented)  
*Adjustable reading position indipendently from in-out hoses direction*



## Automatic - Manual Nozzles

**FNA 60**  
60 Lt/min  
Connection 3/4"



**FNA 120**  
120 Lt/min  
Connection 1"



Alluminium

**FNM 80**  
Swivle connector  
80 Lt/min  
Connection 3/4"



Polypropylene

**FNP 80**  
Swivle connector  
80 Lt/min  
Connection ø19-25



## Hoses

Diesel delivery hoses with different lenghts (\*) with fix or swivle connectors and nozzle



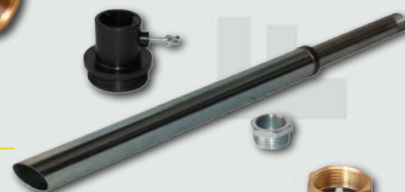
Coil of Diesel delivery hose with inner diameter 3/4" and 1"

Diesel suction hose kit, 1" - 2 mt. long, with connector and foot valve in brass



Swivle connector integrated on the hose

Telescopic tube kit, connections in steel



## Valvs

Foot valves, in brass, with or without strain



## Nozzle holder



Nozzle and hose holder, adaptable on MEC 63 asyn-chronous motor


(\*) Thanks of inside operating of the hoses, it's possible meets every applications needs



FLUID Fuel Transfer Equipments



Based on more then ten years of experience of its members, FLUID s.r.l. was established in Modena. The company, operating in the field of fuel transferring equipments and accessories, has the aim to create flexible, reliable and easy solutions, in the way to realize the rising needs of the customer, believing that the “MADE in ITALY” could still be differentiated and appreciated on the market, because of its quality and design.



**FL 40 DC**  
Battery diesel transfer pump



**FLC 40 DC**  
Battery diesel transfer pump



**FLK 40 DC**  
Complete of suction hose, delivery hose and nozzle



**FLD 40 DC**  
Drums kit complete of telescopic tube, delivery hose, nozzle and nozzle-hose holder



**FLC 60 DC**  
Battery diesel transfer pump



**FLK 60 DC**  
Complete of suction hose, delivery hose and nozzle



**FLW 60 DC**  
Complete of meter, delivery hose and nozzle




**FLP 60 DC**  
Dispenser complete of meter, delivery hose, nozzle and filter



**FLT 60 DC**  
Box complete of painted metal box, meter, delivery hose, nozzle and filter



**FLC 60 AC**  
AC motor diesel transfer pump



**FLK 60 AC**  
Complete of suction hose, delivery hose and nozzle



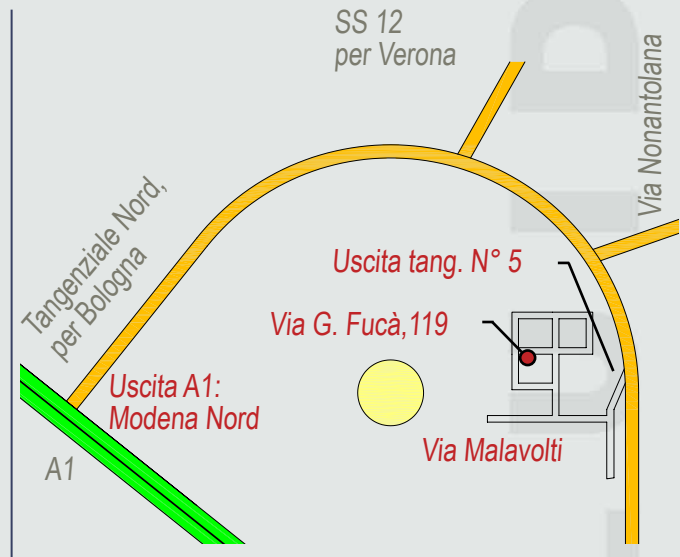
**FLD 60 AC**  
Drums kit complete of telescopic tube, delivery hose, nozzle and nozzle-hose holder



**FLW 60 AC**  
Complete of meter, delivery hose, nozzle and filter



**FLT 60 AC**  
Box complete of painted metal box, meter, delivery hose, nozzle and filter



via G. Fucà, 119    ZI Torrazzi Sud  
41122 Modena (MO) Italy  
Tel. +39 059 250307  
Fax +39 059 250307  
www.fluiditalia.it  
info@fluiditalia.it  
Skype: fluiditalia  
GPS: 44°39'0.43"N 10°57'17.55"E

Pictures and descriptions are FLUID srl properties. Technical datas and characteriscs indicated are intended not binding and FLUID srl could change them without any advanced notice..